



1801 E. Teague Ave.
Fresno, CA 93720
(559) 298-7087

Information for Pastoral Candidates

Church Profile

2008/2009

Table of Contents

Executive Summary.....	3
Pastor Profile.....	4
Vision Statement	5
Core Values.....	6
Statement of Faith.....	7
The Staff.....	9
Ministries.....	11
Attendance & Giving.....	14
Present & Future Building Needs.....	15
Our Fresno Area Community.....	17
Church & Pastoral History.....	20

Executive Summary

After 28 years as a Southern Baptist church, and for the first time in over 22 years, Woodward Park Baptist Church of Fresno, California is seeking a Senior Pastor for its dynamic congregation.

For informational purposes, this Church Profile is made available to possible pastoral candidates and others who are in a position to recommend a Godly man to be the spiritual shepherd to our flock.

The Table of Contents outlines subjects which are summarized in each section of this Profile. Herein you will find helpful background material and factual information regarding where we have been as a church, who we are now, and who we hope to become under the leadership of the Holy Spirit and the man God leads to us.

God has blessed our church from its beginning and continues to bless us today. In Cooperative Program and missions giving, we have been among the top 25 Southern Baptist churches in California for several years. Many state convention personnel are active members of our church and serve in many leadership capacities. God has blessed us with many dedicated ministerial and lay leaders who have a passion to transform lives into loving Christians who reach their world for Jesus Christ.

For several weeks our congregation of believers has been preparing our individual and collective and hearts, and praying for God to prepare the heart of His chosen man and that of his family. Our purpose is to find that one man whom God leads to be our Pastor. We covet your prayers to this end.

To God be the Glory; Great things He is doing at Woodward Park Baptist Church!

Woodward Park Baptist Church

Pastor Profile

Woodward Park Baptist Church is looking for the new leader God has chosen for us. After prayer, much discussion, and input from our church leaders and the congregation, the Search Committee has adopted the following Pastor Profile which we believe reflects the character, competencies, commitments and convictions we are looking for in our new pastor.

This list is not exhaustive but focuses on the things we believe should be evident in his life. In summary we are looking for **a compassionate pastor, a passionate preacher and a spirit-filled leader whose spiritual convictions are in keeping with the Baptist Faith and Message.**

CHARACTER

Who he is

- Holiness** A life that demonstrates Christ like integrity
- Compassion** A heart that is genuinely concerned for others
- Boldness** A will that courageously stands for truth
- Spirit Filled** A spirit that is humble and sensitive to God's leading
- Wisdom** A mind that is filled with the Word and common sense
- Contentment** A lifestyle that demonstrates a healthy balance

COMPETENCIES

What he does well

- Preaching** A spiritual gift evidenced by changed lives
- Leading** A spiritual gift evidenced by vision, team building and growth
- Equipping** A spiritual gift evidenced by missional disciples

COMMITMENTS

What is important

- Preacher** A passion for the Word resulting from a clear call of God
- Pastor** A passion for the flock resulting from a clear call of God
- Evangelist** A passion for the lost resulting from a clear call of God

CONVICTIONS

What he believes

- Family** A commitment to his family as a highest priority
- Church Polity** A commitment to congregational rule and Baptist polity
- Baptist F & M** A commitment to our core Baptist beliefs
- Faith & Life** A commitment to impact our culture for Christ
- Abstinence** A commitment to live life to a higher standard

"Man does not see what the Lord sees, for man sees what is visible, but the Lord sees the heart."

1 Samuel 16:7b (HCSB)

Our Vision

Transforming lives into loving Christians who REACH their world

Transforming Lives

Go and make disciples of all nations, baptizing them . . . and teaching them to obey everything I have commanded you.” Matthew 28: 19

With Evangelism, Discipleship, and Fellowship, three of the five purposes of a church, we strive to lead as many people as possible to a saving knowledge of and personal relationship with Jesus Christ (evangelism). We then strive to educate and grow Christians into maturity (discipleship). Growing people into mature Christians requires that they are connected to other believers within the church (fellowship).

Our strategy is to offer outreach oriented ministries to our community, which meet needs and offer opportunities for participants to accept the life-changing message of Jesus Christ. Aside from annual events such as Light Your Christmas and Upward Basketball, it is our strategy to use Bible study classes as a primary means for life transformation. Bible study classes organize the church into smaller groups, offering prayer, Bible study, encouragement, and practical assistance to care for the periodic needs of people as they allow Christ to transform their lives.

Loving Christians

One of the teachers of the law . . . asked him, “Of all the commandments, which is the most important?” “The most important one” answered Jesus, “is this: ‘Hear, O Israel, the Lord our God, the Lord is one. Love the Lord your God with all your heart and with all your soul and with all your mind and with all your strength.’ The second is this: ‘Love your neighbor as yourself.’ There is no commandment greater than these.” Mark 12:28-31

The Christian life is simple: love God and love others. We love God through our Worship, a fourth purpose of the church. Consequently, our church offers weekly encounters with God that are designed for today's contemporary believer. These worship experiences are designed to inspire, refresh, and motivate worshippers to live their lives to honor Jesus Christ. Our strategy is to offer worship with contemporary music, practical preaching, creative and performing arts. We desire to provide opportunity for worshippers to be transformed by faith in Jesus Christ. We embrace technology to communicate to today's culture. We strive for excellence in all public services to express our wholehearted passion for Jesus Christ.

In addition to loving God, our church exists to teach people how to love others. We are to love others just as Jesus loved us. Jesus sacrificed His life for us! Jesus also modeled a servant lifestyle, an example that demonstrates love for others.

REACH their World

Go and make disciples of all nations, baptizing them . . . and teaching them to obey everything I have commanded you.” Matthew 28: 19

To make disciples for Christ, what the church calls Missions, is the fifth purpose of the church. It is God's mandate to all Christians to make more Christians. It is God's will for every Christian to reach their world, whether it is their world at work, at home, or in another nation.

Our Values

- We believe that the church should be culturally relevant while remaining doctrinally pure.
- We believe that the church should celebrate God's character and His works through regular worship because God desires and deserves it.
- We believe that biblical teaching is essential for transformation in individuals' lives and in the church.
- We believe that prayer moves God into action and is the primary catalyst for personal and corporate growth.
- We believe that the church should operate as a unified community of servants stewarding their spiritual gifts.
- We believe that life-change happens best in the context of Christ-centered, loving relationships.
- We believe that lost people are highly valued by God, and therefore, ought to be highly valued by the church, and that evangelism is primarily a process.
- We believe that excellence honors God, reflects His perfect character, and inspires people. Full devotion to Christ is the expectation for every believer.
- We believe in covenant marriage and those marriages, families, youth, and children should be held in high esteem and assisted in their growth process.
- We believe that the church should be a place where people are able to share their personal needs, feelings, ideas, and problems in an environment of trust and safety.

Our Statement of Faith

WPBC is committed to and has adopted the Baptist Faith and Message 2000 as our confession of faith. Our statement of faith further details this commitment in the below summary:

In essential beliefs — we have unity.

“There is one Body and one Spirit...there is one Lord, one faith, one baptism, and one God and Father of us all...” Eph. 4:4-6

In non-essential beliefs — we have liberty.

“Accept him whose faith is weak, without passing judgment on disputable matters... Who are you to judge someone else’s servant? To his own master he stands or falls... So then each of us will give an account of himself to God... So whatever you believe about these things keep between yourself and God.” Romans 14:1,4,12,22

In all our beliefs — we show charity.

“...If I hold in my mind not only all human knowledge but also the very secrets of God, and if I have the faith that can move mountains — but have no love, I amount to nothing at all.” 1 Cor. 13:2 (Ph)

The Essentials We Believe:

About God

God is the Creator and Ruler of the universe. He has eternally existed in three personalities: the Father, the Son, and the Holy Spirit. These three are co-equal and are one God.

*Genesis 1:1,26,27, 3:22; Psalm 90:2; Matthew 28:19; 1 Peter 1:2;
2 Corinthians 13:14*

About Jesus Christ

Jesus Christ is the Son of God. He is co-equal with the Father. Jesus lived a sinless human life and offered Himself as the perfect sacrifice for the sins of all people by dying on a cross. He arose from the dead after three days to demonstrate His power over sin and death. He ascended to Heaven’s glory and will return again someday to earth to reign as King of Kings, and Lord of Lords.

*Matthew 1:22, 23; Isaiah 9:6; John 1:1-5; 14:10-30; Hebrews 4:14,15;
1 Corinthians 15:3,4; Romans 1:3,4; Acts 1:9-11; 1 Timothy 6:14,15; Titus 2:13*

About the Holy Spirit

The Holy Spirit is co-equal with the Father and the Son of God. He is present in the world to make men aware of their need for Jesus Christ. He also lives in every Christian from the moment of salvation. He provides the Christian with power for living, understanding of spiritual truth, and guidance in doing what is right. He gives every believer a spiritual gift when he or she is saved. As Christians, we seek to live under His control daily.

*2 Corinthians 3:17; John 16:7-13, 14:16,17; Acts 1:8;
1 Corinthians 2:12, 3:16; Ephesians 1:13; Galatians 5:25; Ephesians 5:18*

About the Bible

The Bible is God's Word to us. It was written by human authors, under the supernatural guidance of the Holy Spirit. It is the supreme source of truth for Christian beliefs and living. Because it is inspired by God, it is the truth without any mixture of error.

2 Timothy 3:16; 2 Peter 1:20,21; 2 Timothy 1:13; Psalm 119:105,160, 12:6; Proverbs 30:5

About Human Beings

People are made in the spiritual image of God, to be like Him in character. People are the supreme object of God's creation. Although every person has tremendous potential for good, all of us are marred by an attitude of disobedience toward God called "sin." This attitude separates people from God and causes many problems in life.

Genesis 1:27; Psalm 8:3-6; Isaiah 53:6a; Romans 3:23; Isaiah 59:1, 2

About Salvation

Salvation is God's free gift to us, but we must accept it. We can never make up for our sin by self-improvement or good works. Only by trusting in Jesus Christ as God's offer of forgiveness can anyone be saved from sin's penalty. When we turn from our self-ruled life and turn to Jesus in faith, we are saved. Eternal life begins the moment one receives Jesus Christ into his life by faith.

*Romans 6:23; Ephesians 2:8,9; John 14:6, 1:12; Titus 3:5; Galatians 3:26;
Romans 5:1*

About Eternal Security

Because God gives us eternal life through Jesus Christ, the true believer is secure in that salvation for eternity. If you have been genuinely saved, you cannot "lose" it. Salvation is maintained by the grace and power of God, not by the self-effort of the Christian. It is the grace and keeping power of God that gives us this security.

John 10:29; 2 Timothy 1:12; Hebrews 7:25, 10:10,14; 1 Peter 1:3-5

About Eternity

People were created to exist forever. We will either exist eternally separated from God by sin, or eternally with God through forgiveness and salvation. To be eternally separated from God is Hell. To be eternally in union with Him is eternal life. Heaven and Hell are real places of eternal existence.

John 3:16; John 14:17; Romans 6:23; Romans 8:17-18; Revelation 20:15; 1 Cor. 2:7-9

The Staff at Woodward Park Baptist Church



David Peugh – Associate Pastor

David coordinates, manages, and leads various teams to facilitate the successful daily business of the church and comprehensive adult education and ministry programs. David has nine years of ministry experience. Before his call to ministry in 1999, David worked for 18 years in the micro-computer industry. The majority of his experience is in executive level management highlighted by a feasibility study and launch of Canon Factory Outlets nationwide. David holds degrees from Southwestern Baptist Theological Seminary. David's greatest passions are studying, teaching, preaching the Word of God and watching the transforming power of God in the lives of others.



Teresa Watts – Worship Minister

Teresa has been the pianist for WPBC for 15 years and the Worship Minister for nine years. She graduated with a degree in Music Education from Azusa Pacific University. She is married to Daryl Watts, Healthy Church consultant from the California Southern Baptist Convention, and they have two teenagers that they are crazy about. Teresa is passionate about her relationship with God and about leading this church body in worship.



Mike Lacaze – Youth Pastor

Mike oversees the church's Youth, College, and Missions programs. He was married in May 2008 to his wife, Ersilia. Mike has lived most of his life in California. Mike first came to WPBC in the 6th grade when his family moved to Fresno. While attending college at CSUF Mike served at WPBC as the interim youth director. Mike next served as Pastoral Assistant working with the Senior Pastor & Youth Pastor doing discipleship and outreach projects. He then spent two years working at the California Southern Baptist Convention as the Youth Evangelism Coordinator, as a NAMB missionary. Following his time at the CSBC he served as an Associate Pastor at a new Southern Baptist church plant in Ukiah, California. He came home to WPBC to serve in his current position in March 2006.



Amber Tidwell – Children's Minister

Amber originated from Opelika, Alabama, and went to college at Troy University where she majored in English Literature. Amber received her Master of Divinity with Specialization in Christian Education from New Orleans Baptist Theological Seminary. Amber served as Associate Children's Minister at Brentwood Baptist Church in Tennessee prior to accepting her position as Children's Minister at Woodward Park Baptist Church. Amber has been serving at WPBC for 3 years and loves it!



Christine Nourian – Preschool Minister

Christine has been a member and faithful servant of WPBC for 14 years. Christine has served in her current role for 4 years ministering to children ages birth through pre-kindergarten. Christine obtained her Bachelor's Degree in 1992 from CSUF in Child Development. She loves combining her education and passion for sharing God's Word with children in new and exciting ways. Christine has been married to Steve for 12 years and they have been blessed with daughter Brittany age 10 and 7 year old twin sons Joshua and Elijah.

WPBC Ministries

Sundays:

Worship Services 8:30 • 11:00 am
Bible Study (all ages) 9:45 am
Adult Discipleship 6:00 pm
Youth Small Groups
AWANA

Wednesdays:

All Church Dinner (seasonal) 5:30 pm
Adult Discipleship 6:30 pm
Adult Choir (seasonal)
CHAOS (High School)
LIFE (Jr. High)
College & Career 8:30 pm

A current events calendar can be found on our website at www.wwpbc.org.

Adult Ministry

Sunday Morning Bible Study

A wide variety of Bible study and other small groups are available to all age groups. Whether you're a couple just starting out, new or seasoned parents, or an adult just looking for exciting in-depth Bible study and an opportunity to make some new friends, we'll help you take real faith into real life.

Men's and Women's Ministries

Some opportunities include father/son camping, father/daughter date night, mother/daughter luncheons, men's and women's retreats, mission trips, and special classes.

Worship Ministry

Understanding that we were created to worship, the goal of our Worship Ministry is to provide an opportunity for each person to have a fresh experience with God. Through music, drama, and testimonies we seek to honor God with the gifts He has given us. There are opportunities to be involved in choir, praise team, band, drama, and many technical areas.

College & Career Ministry

Sunday Morning Bible Study

The focus of our gathering is to wrestle with the truths of Scripture and apply them to our lives.

Wednesday Discipleship

We meet every Wednesday night at 8:30 pm off campus for discipleship. The atmosphere is casual, everyone participates in the discussion, and the topic is chosen by the group.

Events & Activities

Some of our activities have included Fresno Falcons hockey games, Halloween and Christmas parties, and ski retreats.

Youth Ministry (7-12th Grade)

Sunday Morning Bible Study

These Sunday morning classes are designed to encourage, pray for, and meet the physical and spiritual needs of our teenagers. Sunday morning Bible study is separated by age.

Youth Small Groups

We offer small groups for those who want to go deeper in their walk with the Lord.

LIFE (Jr. High) & CHAOS (High School)

The primary focus of these programs is outreach and evangelism. The activities are planned to help youth build relationships, experience wholesome fun, and develop awareness and openness of spiritual needs.

Events & Activities

Every year we participate in Centrifuge Youth Camp (August), Tsunami Youth Conference (December), DiscipleNow weekend (Spring), and mission/service projects.

Children's Ministry

Sunday Morning Bible Study

With a focus on Bible skills, discipleship, and fellowship, this hour is designed to help children connect with Jesus Christ, their peer's and their teachers in a safe, fun environment.

Compass Point Jr. Church

Compass Point Jr. Church is an age appropriate worship service for children grades K-6 designed to teach kids how to worship and what it means to worship.

AWANA

Children are encouraged to memorize Scripture and complete other tasks that enrich their Spiritual growth by working through the AWANA curriculum. They also participate in organized games for fun.

Events & Activities

UPWARD Basketball & Cheerleading (January-March) is an affordable, low competition, high energy basketball league that lasts for 8 weeks. There are teams available for each grade and are divided by gender. "Rock Your World" is a cutting edge summer program that combines a week-long Sports and Arts Camp with Bible Study and worship.

Preschool Ministry

Preschool Extended Care/Nursery

Our preschool staff cares for children (birth through pre-K) during both worship services and during the Bible study hour. We offer Bible teaching, crafts and music.

Preschool Care

AWANA clubs offer Puggles for 2 year olds and Cubbies Bible lessons & verse memorization for age's 3-Pre-K.

Woodward Park Baptist Church Attendance and Giving By Fiscal Year

Survey Period	Sunday AM Worship Att.	Total Baptisms	SS Average Att.	Total Receipts as Reported on the Annual Church Profile (ACP)	Coop. Program
2008	432	15	432	\$1,125,687	\$86,992
2007	528	14	373	\$1,229,256	\$90,278
2006	493	10	355	\$1,014,815	\$70,920
2005	500	20	385	\$1,144,949	\$69,562
2004	550	40	393	\$887,268	\$74,013
2003	585	36	445	\$833,640	\$61,254
2002	505	50	347	\$779,693	\$62,347
2001	550	46	400	\$779,591	\$58,891
2000	423	21	339	\$721,776	*
1999	350	27	328	\$647,602	*
1998	350	37	367	\$621,761	\$32,878
1997	432	57	337	\$785,654	\$30,131
1996	425	40	307	\$486,293	\$33,000
1995	265	11	255	\$383,436	\$23,449
1994	300	31	-	\$277,775	-
1993	300	31	180	\$277,775	\$23,216
1992	220	17	150	\$294,135	-
1991	222	15	138	\$278,935	\$23,549

(-) Question was not answered in this survey.

(*) Question was not presented in this survey.

Campus Development Plan Overview and Current Construction Status - Fall 2008

Approved Site Plan Overview

Woodward Park Baptist Church occupies approximately six acres on the corner of Maple and Teague in Fresno, California. The site plan shown below is approved by the congregation and the city. This plan is designed to meet the needs of our ministry and accommodate growth to 1,000 people on the campus at one time (approximately three times current attendance). The plan includes: a new 800-1,000 seat sanctuary/worship center; a new two-story multipurpose ministry center; a new office complex; expanded and remodeled space for youth, children and preschool ministries; a centralized fellowship courtyard with children's playground; an attractive campus that represents the church family well and is inviting to the community; and additional parking and storage.

Construction of the campus will be completed in 3 to 4 phases over 10 to 15 years as God provides and directs. Our financial philosophy for developing the campus is to build phase 1, the two-story multipurpose ministry center, with funds generated from a 3-year capital gift campaign without taking on any additional long term debt (see the next page for an overview and status of phase 1). Building the ministry center in phase 1 will provide the needed ministry space to grow the church and position us financially to build the sanctuary in phase 2. Additional parking and the fellowship courtyard at the center of the campus will be included in the first two phases. The remainder of the campus will be completed with subsequent phases. **Approved Site Plan**

- Existing Buildings = E
- 1 - Multipurpose/Sanctuary
 - 2 - Christian Education
 - 3 - Children's
 - 4 - Office Trailer
- (Not shown - will be removed)



- Planned New Buildings = N
- 1 - Sanctuary
 - 2 - Ministry Center
 - 3 - Office Extension
 - 4 - Youth Extension
 - 5 - Children's Preschool Extension
 - 6 - Fellowship Courtyard
 - 7 - Storage Building
 - 8 - Additional Parking

Phase 1 Overview and Current Status

The priority focus of phase 1 construction is a 10,000 square foot, two-story multipurpose ministry center. This building (shown below) addresses our most pressing space needs and will help position us for stronger ministry and continued growth. The needs addressed include: additional education space; more large-group meeting spaces; and potential overflow for Sunday morning worship. We have conducted a capital gift campaign for the construction of this building and have received over \$700,000 toward pledges of 1.2 million.

Our plans for the ministry center are completed (construction documents) and have been approved by the city planning and building departments. We have pulled building permits but are not proceeding at this time due to current economic conditions and vacancy of the Senior Pastor position.

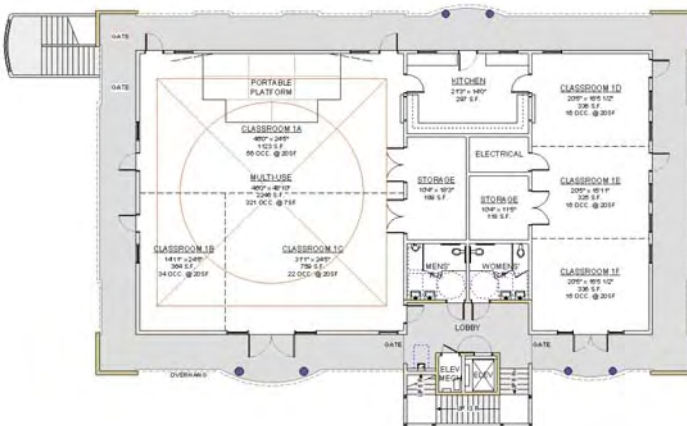
Ministry Center



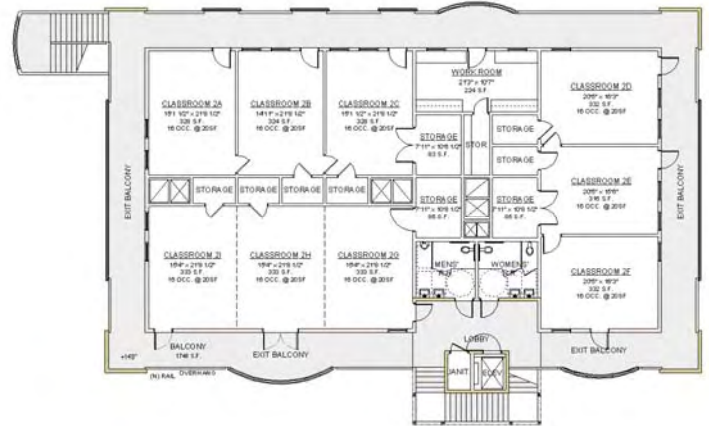
View From Center of Campus



View From Street



Floor Plan – Ground Level

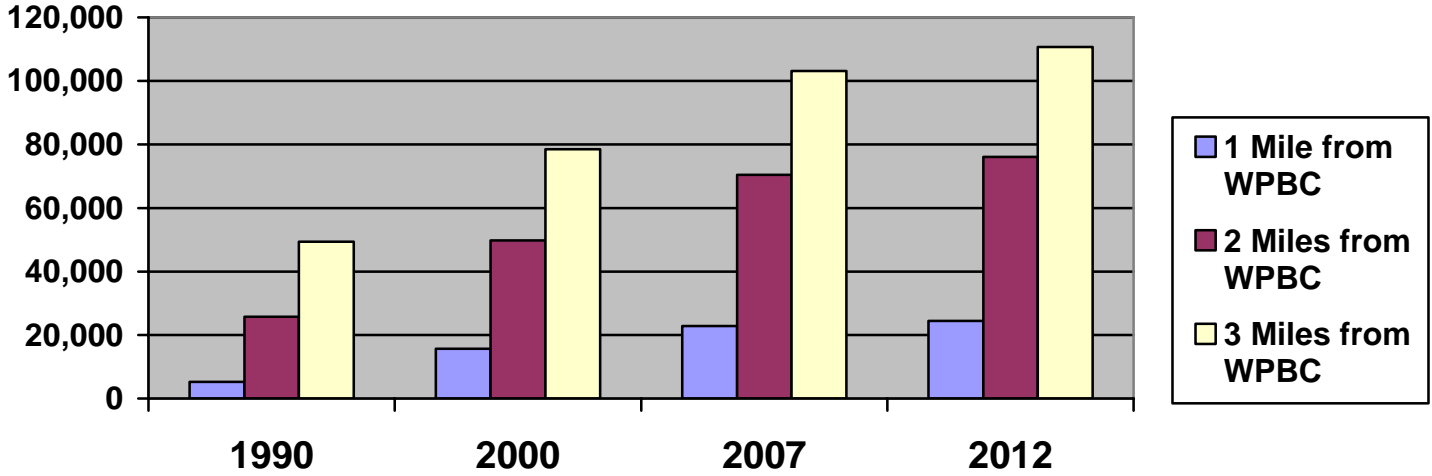


Floor Plan – Second Level

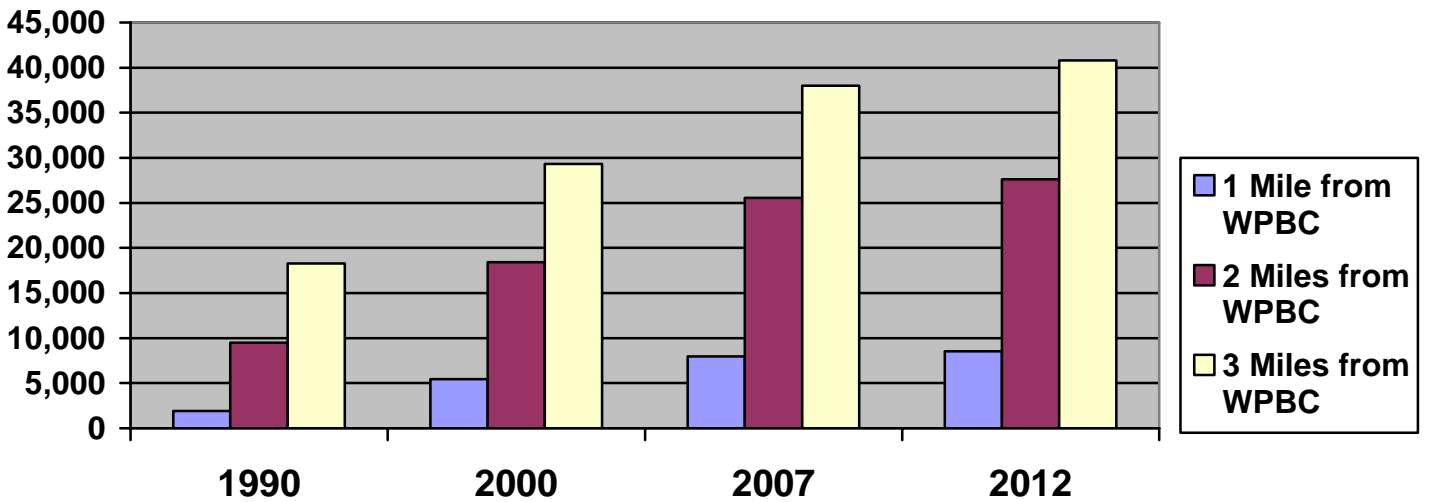
Our Fresno Area Community

Data Source: Pitney Bowes MapInfo

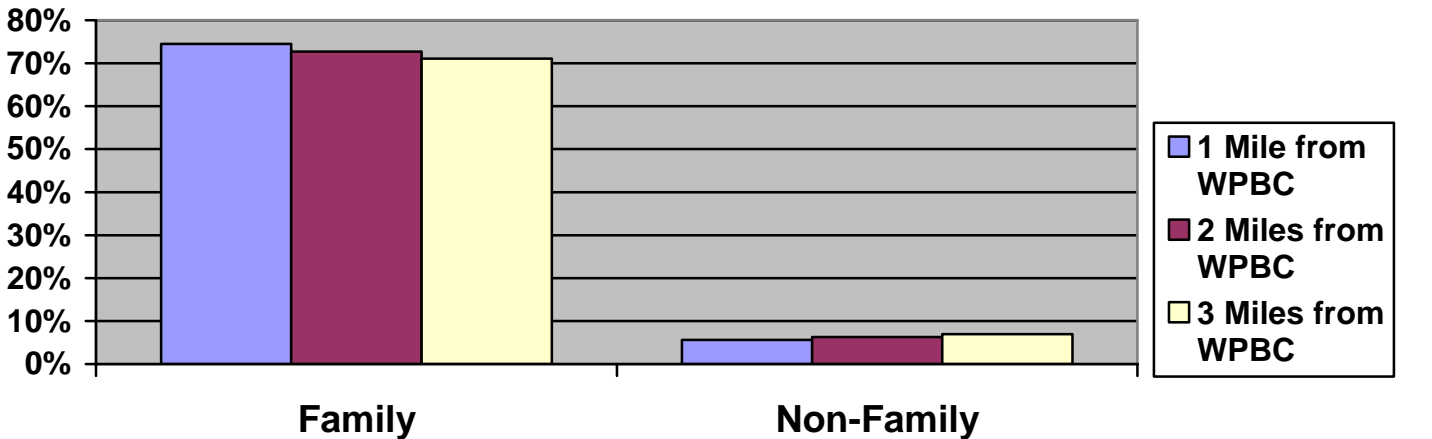
Population



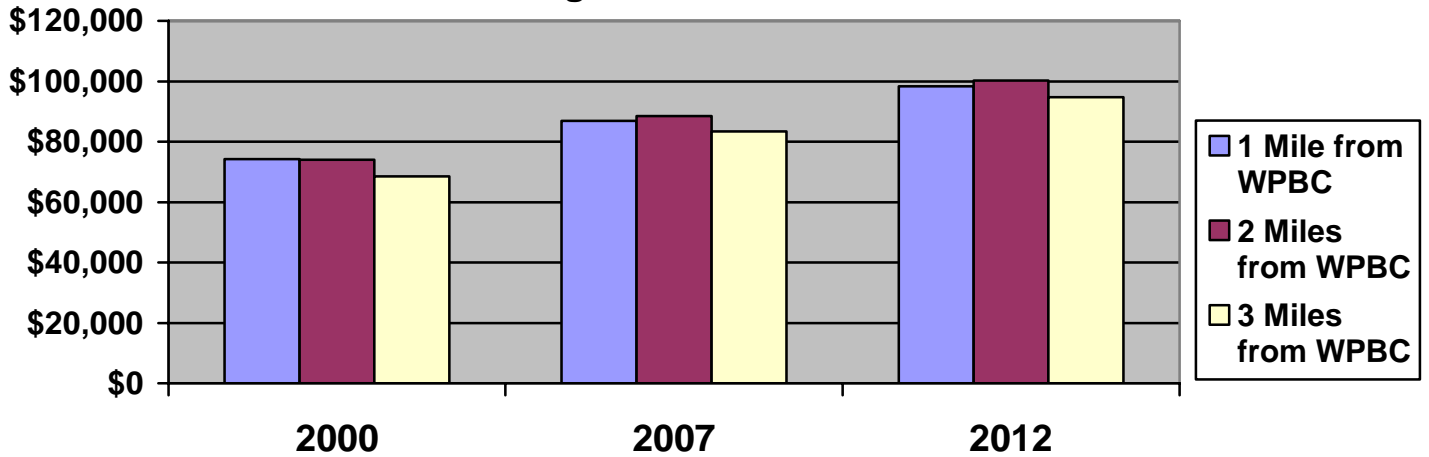
Total Households



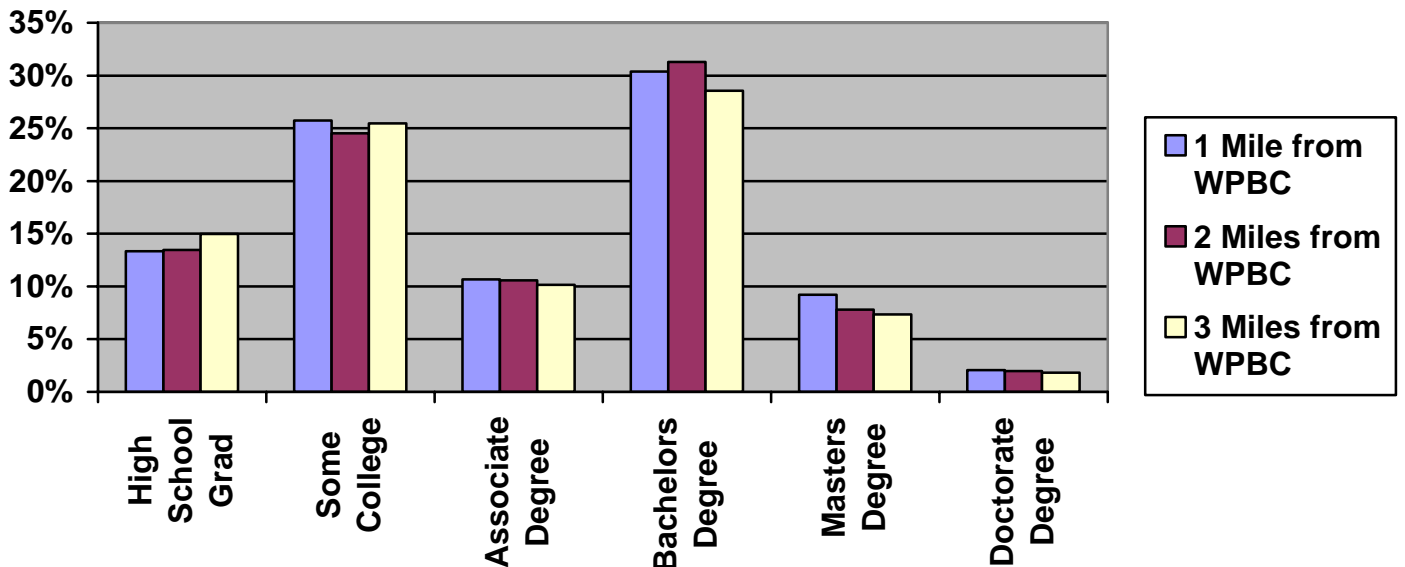
Family Households & Non Family Households 2000



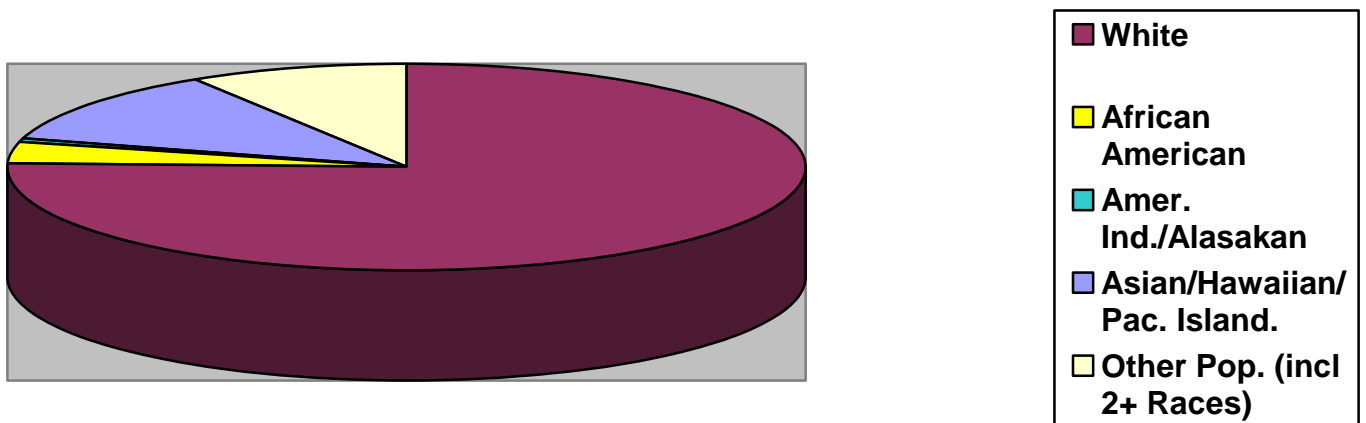
Average Household Income



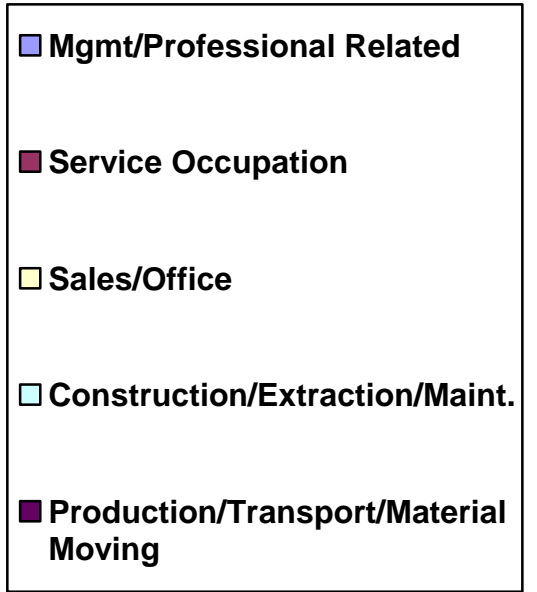
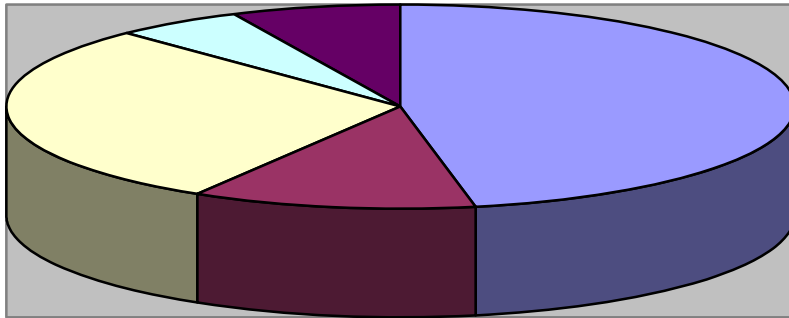
Education 2007



2007 Race and Ethnicity within 3 mile radius of WPBC



2000 Employment by Occupation within 3 mile radius of WPBC



Church & Pastoral History

By Polly McNabb & Renae Deck

Who have 46 combined years of service to WPBC

Woodward Park Baptist Church had its beginnings in the minds of a few Baptists who, whether from burnout or boredom, probably some of both, decided business as usual wasn't going to get the job done. We were tired of going to endless church meetings and having guilt trips put on us when we were absent. Perhaps we had a case of the "blahs."

No, this group wanted to change the methods, but not the message. We worshipped the same Savior we had for years and had no intention of changing that, but wanted more than a three-point sermon with several points in between and a few dragged-out hymns. Not that we didn't love the old hymns, but we wanted to see more life put into them, so we talked about a balanced program of music with hymns and choruses and anthems and all those things that give a person Goosebumps in preparing for a relevant message. By relevant we meant the kind that would help believers deal with everyday problems. We felt we'd had enough pie-in-the-sky by and by.

We wanted to make every person who walked in the door feel a sense of warmth, regardless of how they were dressed, the length of their hair, or any of those other impertinent no-no's which so often label a person.

What we really wanted was freedom. We wanted to be free to be creative, to be innovative. We visualized a loving, caring fellowship of believers who wouldn't have apoplexy every time something unusual popped up in a worship service. These dreamers were audacious enough to believe we could grow a church where the members would do the loving, but allow God to do the judging!

TALKING TURNS TO ACTION

The time came when the talk stopped, and action began. Ten people met March 2, 1980 in the home of Ernest and Jackie Wilder in the Woodward Park area, approximately one and a half miles from the present location. We voted to call Ronald Chandler, director of stewardship for the state convention, as pastor. Chandler, who had served as missionary of Mid-Valley Association, had studied population movements, growth and things necessary to know where a church should be planted, so he had already pinpointed this location for a new church site. Interesting that the pin he placed on a map in his office appeared in this exact location, because there was nothing on the southwest corner of Teague and Maple but a pasture with some horses and cows nibbling grass. He envisioned this location a perfect one for a new church.

Our new congregation rented the activities building at Ft. Washington and met there March 30, at 10 a.m., with 22 people present for morning worship. We wasted no time in constituting into a church and by the time the charter closed there were 27 members.

While we were meeting at Ft. Washington, Gary McDonald, a Fresno businessman, gave our new church four acres of land on Teague and Maple, the exact location where the first pastor had envisioned a new church and put the pin in his map to stake it. Think of it. Four acres of prime land, free and clear! We continued to meet at Ft. Washington, however, because we had no idea how the horses would react to a Baptist sermon, and none of us were willing to stand in the sun for services.

However, the picture changed dramatically when the school officials decided we could not have Bible study in the activities building. Some of us gave up trying to figure out why worship was OK, but Bible study was out. So Duane and Carolyn Barrett opened their home for Bible study Sunday evenings, and for

sometime we met at Ft. Washington mornings for worship and evenings for Bible study at the Barrett's. Then Duane suggested the church purchase a couple of trailers and move them onto our property, so we picked up our doughnuts and coffee and moved to the new property. It was assumed he got tired of vacuuming up all the dust from the pitter patter of little and big feet, for these meetings moved much dirt from the fields outside into the house. So the first mobile unit was moved onto the church's property and dedicated in May, 1982.

MEMBERSHIP AND LEADERSHIP

Membership the first year grew to 37, but there was not one pre-school child. Ruth Ann Harris and Jackie Wilder, both experienced workers with pre-schoolers, came prepared every Sunday, laboriously lugging their supplies in each week, always ready for that first child to appear. It was two full years before Lonnie and Marsha Downs finally arrived with Nick and Joshua. The children's work had begun! And church membership moved upward steadily to 121 when Chandler resigned as pastor in 1985.

There probably would have been several more join during Chandler's tenure, but some said they were waiting to see if that church really meant business, others couldn't picture themselves meeting in a trailer. But the children loved it! How many other churches in this city provided a field with cows and horses to watch. "It was a wonderful learning experience for the children," Ruth Ann said.

Herb Hollinger, editor of The California Southern Baptist and a member of the congregation, served three months as interim pastor before Keith Springer was called and served one year. Springer was followed by Elmer Gray, retired editor of The California Southern Baptist, who served as interim pastor from October, 1985 to June 1, 1987, when Ed Huffman, with his wife, Ronda, arrived on the field.

Attendance and membership have seen steady growth in the past 20 years of Huffman's tenure. Membership in 1987 was 129, and went to 147 in 1988. This was the year, also, that Gary McDonald gave the church an additional two acres of land. Attendance the next year jumped to 204 with 247 in 1990 and then moved to 300, 352 and 382 the next three years. In 1994 attendance reached 419 and increased almost 100 yearly the next two years with 596 in 1996. In 2007 we were at an amazing 702.

BUILDINGS CONSTRUCTED

The first building, the planning of which had been started prior to Huffman's arrival, was dedicated in March of 1987. Gary McDonald served as contractor and again saved the church thousands of dollars. He also allowed the members to do the clean-up during construction and this, too, saved money. With construction of this building, the church eliminated one of the trailers which improved the looks of the grounds, to say nothing of the rent we saved.

A second building, a two-story education unit, was dedicated in April of 1992. It would be impossible to name all of the members who have given and continue to give unselfishly of their time and money to make these buildings a reality.

With construction of the all-purpose building, dedicated in September of 1997, the church voted to turn the two-story unit into a children's building and honor our director of children's work, Ruth Ann Harris, by naming it after her. The special celebration was held May 19, 1996 to coincide with her retirement as director of our children's work. The children's department by this time was running over 200 in attendance.

INNOVATIVE WORSHIP

We started early to put into practice some of the things we had envisioned, so two things were started which highlighted the opening service. Carolyn Barrett immediately began working with children's music and each Sunday she conducted a brief feature for the children. It would be difficult to know who enjoyed this feature more, the children or adults, but it was so popular everyone wondered from week to week what she and Duane would come up with next. One week it was a real, live toy poodle! Because of this couple, Woodward Park from its very beginning had an unusually good music program. How many other churches could boast having one of the most popular music teachers in the Fresno and Clovis school systems to work with their children! So God has blessed our church with talented people from its inception, and it continues to get better and better.

STAFF GROWS

While we started out with a great group of youth, they had the audacity to all graduate from high school the same year, with most of them leaving for college. Nine or ten of them attended California Baptist College in Riverside, so we were suddenly almost youthless.

In June of 1989 Dave MacNeill appeared on the scene and thus began the regrowth of our youth department. He worked part-time while attending school until August 1 of 1995 when he became a full-time youth pastor. Growth in this group has been phenomenal. In 2006 our own "church grown" Mike Lacaze became our full time youth pastor.

Our music department was led by part-time and volunteer directors for sometime before Michael Spitzer arrived. But who would have known that our part time pianist would someday become our full time Music Minister in 1999. Without hesitation worship has become one of Woodward Park's strongest assets. To round out this amazing group is David Peugh, Associate Pastor (2005), Amber Tidwell, Children's Minister (2005), and Christine Nourian, Pre School Director (2005). Not to mention a number of people who serve on our Administrative Staff.

FINANCES

Our finances have grown from \$101,257 in 1988 to \$1,200,000 in 2007. We have records of early day giving, but they are not available without some digging, and this history has gone on long enough!

TODAY

Putting finances, buildings and staff aside we are still who we set out to be, a church that seeks to reach people through relationships, evangelism, discipleship and a strong unapologetic preaching of the Word. We want to look into the future, see where God is working and jump in, leading people into a deep and passionate relationship with Jesus.